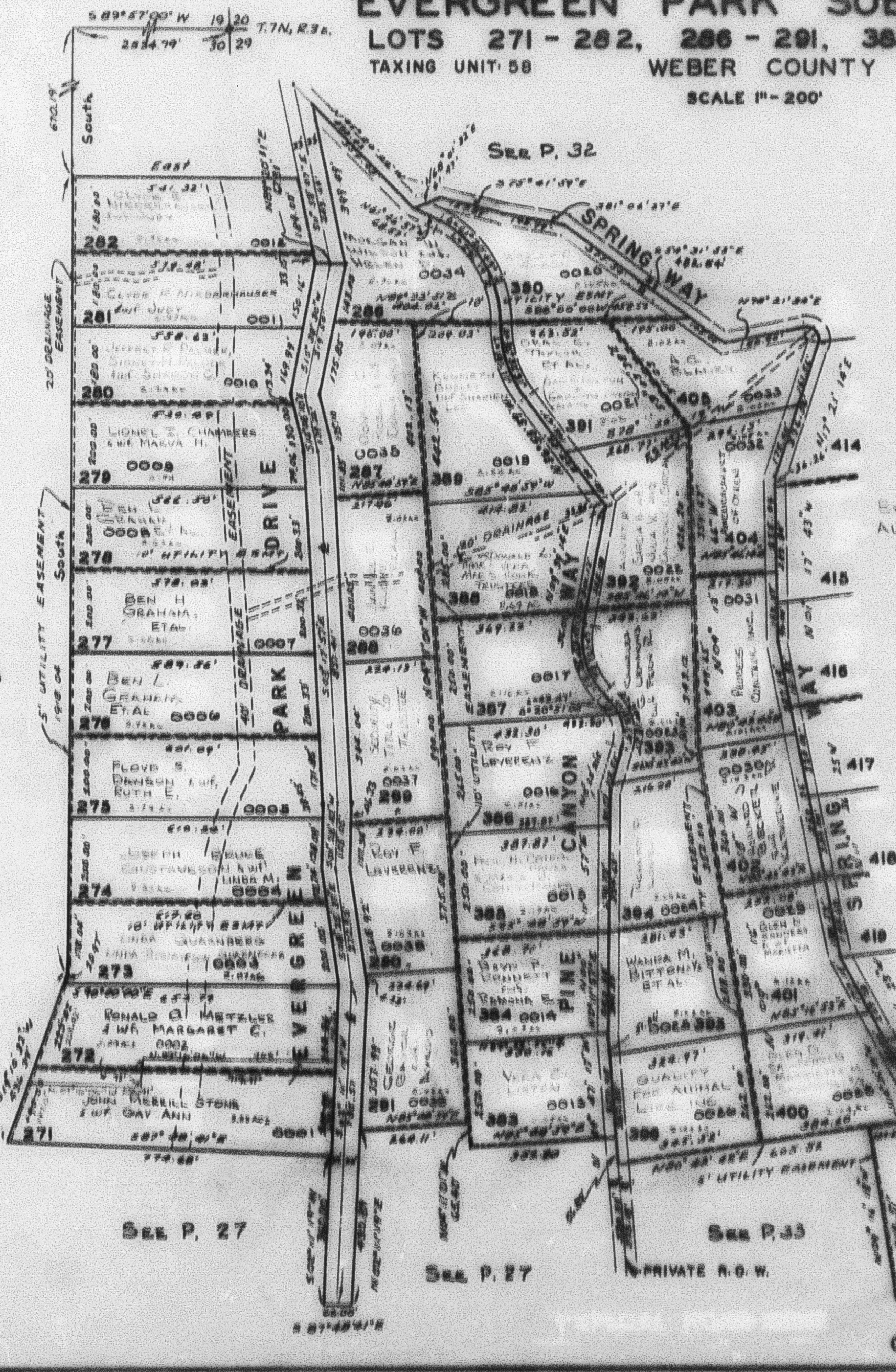


PART OF SEC. 29-30, T.7N., R.3E., S.L.B.&M. EVERGREEN PARK SUBDIVISION NO.1

LOTS 271 - 282, 286 - 291, 383 - 386, 399 - 405
TAXING UNIT 58 WEBER COUNTY PREFIX 23-031

SCALE 1" = 200'



EXCEPT WHERE OTHERWISE SHOWN,
ALL LOTS ARE OWNED BY:
WESTERN LAND CONTRACTS CO.

SEE P. 35

Note: See Original Plat, Book 13, Page 60
for complete Engineering Data and Lot Acres.

SEE P. 18

SEE P. 27

SEE P. 27

SEE P. 33

GREEN HILL ROAD
PRIVATE R.O.W.